



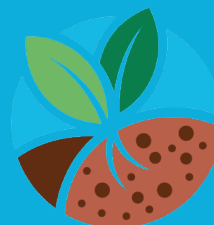
ISAP'S 2020 RISK MANAGEMENT WEBINAR SERIES

BRIDGING THE GAPS

Proceedings



June 18, 2020 | 11 AM - NOON
June 25, 2020 | 11 AM - NOON
July 2, 2020 | 11 AM - NOON



ILLINOIS
SUSTAINABLE
AG PARTNERSHIP

AGENDAS

All webinars will be recorded and available on ISAP's website: ILsustainableag.org

Thursday, June 18

- Climate Change and Crop Production in Illinois through 2030 -

11:00 – 11:30 AM	Eric Snodgrass , Principal Atmospheric Scientist at Nutrien Ag Solutions – Keynote Presentation
11:30 – NOON	Kris Reynolds & Keith Schilling – Panel: Adapting on the Farm & Downstream

Thursday, June 25

- Increasing Working Capital with Soil Health Management Systems -

11:00 – 11:30 AM	Carl Zimmerman , LaSalle County Farmer – Keynote Presentation
11:30 – NOON	Gary Schnitkey and Martin Barbre – Panel: Adding to the Risk Management Toolbox

Thursday, July 2

- Future Consumer Demand for Sustainably Raised Row Crops -

11:00 – 11:30 AM	Jonathan Coppess , Director at Gardner Ag Policy Program, UIUC – Keynote Presentation
11:30 – NOON	Ryan Sirolli, Margaret Henry, & Carter Morgan – Panel: Incentivizing Conservation through the Supply Chain

SPEAKER BIOGRAPHIES

Thursday, June 18

- Climate Change and Crop Production in Illinois through 2030 -



Eric Snodgrass
*Principal Atmospheric
Scientist – Nutrien Ag
Solutions*

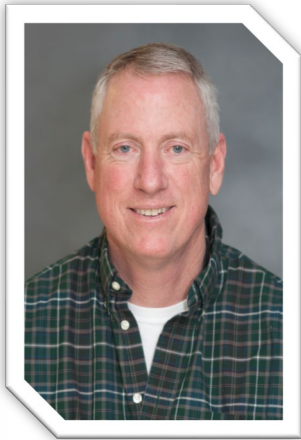
Eric Snodgrass' research focuses on weather analysis and forecasting applications to global agriculture production. He presents his research as a featured speaker at over 40 conferences annually. He is the co-founder of Global Weather and Climate Logistics, LLC. which is a private company that provides logistical guidance and solutions to weather sensitive financial institutions. In 2014, his company merged with Agribility Inc., a precision farm management and predictive analytics company, where he is also co-founder and senior atmospheric scientist. He provides weekly weather updates that focus on weather risk in US agriculture. His current research uses machine learning to better understand field level weather impacts on yields in the US and how to increase confidence in long-range predictions of these impacts



Kris Reynolds
*Midwest Regional
Director – American
Farmland Trust*

Kris Reynolds directs AFT's programs in the Midwest office and oversees key projects, including the Upper Macoupin Creek Watershed Partnership and the Vermillion Headwaters Watershed Partnership in Illinois, where he coordinates activities with farmers and landowners that improve water quality, improve soil health, enhance nutrient efficiency, utilize conservation cropping systems, and meet the goals of Illinois' Nutrient Loss Reduction Strategy. Before joining AFT, Kris worked as a resource conservationist with a local soil and water conservation district in Illinois, where he helped local farmers and landowners develop conservation plans on their land. He also worked as a cover crop specialist with the Illinois Council on Best Management Practices promoting, educating, and advising on cover crop usage. He is a certified crop advisor with the American Society of Agronomy and holds a specialty certification from ASA as a 4R Nutrient Management Specialist. Kris earned a Bachelor of Science in agronomy and ag business from Illinois State University.

SPEAKER BIOGRAPHIES



Keith Schilling, whose expertise is in hydrogeology, had served as acting State Geologist for about a year before his appointment was officially approved by the Board of Regents. Schilling has three decades of experience as a geologist in Iowa and also serves as an adjunct assistant professor in the UI Department of Earth and Environmental Sciences. He holds a master's degree from Iowa State University and a PhD from the University of Iowa.

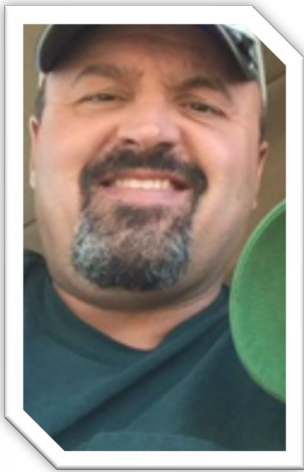
Keith Schilling
State Geologist and
Research Scientist, Iowa
Geological Survey

PERSONAL NOTES

SPEAKER BIOGRAPHIES

Thursday, June 25

- Increasing Working Capital with Soil Health Management Systems -



Carl Zimmerman
LaSalle County Farmer

Carl Zimmerman farms 1,600 acres in LaSalle County, IL. Utilizing no-till and cover crops, Carl will share the budget implications these practices have had on his operation.



Dr. Gary Schnitkey
*Professor, Ag and
Consumer Economics, UIUC*

Dr. Gary Schnitkey is a professor and farm management specialist in the Department of Agricultural and Consumer Economics, University of Illinois. His activities focus on crop economics, crop insurance, agricultural policy, and farmland leasing. Dr. Schnitkey grew up on a grain and hog farm in northwest Ohio. He received a Bachelor of Science degree from The Ohio State University and a Masters and Ph.D. from the University of Illinois. From 1987 through 1998, he was on faculty at The Ohio State University where he held a dairy farm management position. Since 1998, he has been employed at the University of Illinois.

SPEAKER BIOGRAPHIES



Martin Barbre
*Administrator at Risk
Management Agency*

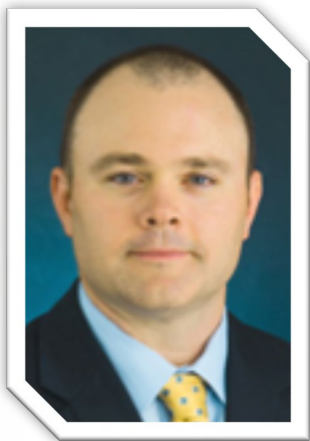
Martin Barbre was appointed Administrator of USDA's Risk Management Agency (RMA) on April 30, 2018. Prior to joining RMA, Mr. Barbre served as President of the National Corn Growers Association and was appointed by Secretary Perdue to be a member of USDA's Illinois Farm Service Agency State Committee until his appointment as RMA Administrator. Mr. Barbre is a long-time farmer who has owned and operated a 6,000-acre farm in Carmi, Illinois, that grows corn, soybeans, wheat and grain sorghum, and specialty crops – such as seed soybeans and white corn. He has served in numerous agricultural leadership roles in Illinois and on various committees, including the National Corn Growers Association, Ethanol Committee, and the Illinois Farm Bureau Young Farmers Committee. Mr. Barbre served on the White County Farm Bureau Board from 1979 to 1999 and again from 2005 to 2009. He has traveled across the United States and internationally, working with many different regions and commodity groups to ensure the success of American Agriculture. Mr. Barbre is an Ag Business graduate and proud alumnus of Southeastern Illinois College.

PERSONAL NOTES

SPEAKER BIOGRAPHIES

Thursday, July 2

- Future Consumer Demand for Sustainably Raised Row Crops -



Jonathan Coppess
*Director at Gardner Ag
Policy Program, UIUC*

Mr. Coppess' experience in federal policymaking guides his research, extension, and teaching in agricultural policy and law. His work connects the history of federal agricultural policy development to current policy development, specifically applied to risk management and natural resource conservation.



Ryan Sirolli
*Global Row Crop
Sustainability Director for
Cargill*

Ryan Sirolli is responsible for leading strategy development and implementation of row crop sustainability programs and initiatives across Cargill's enterprises. Focus areas include optimizing farmer productivity and prosperity while lessening impact on water and climate through scalable adoption of soil health best practices and supply chain alignment. Ryan has spent his entire career working along the food and agriculture value chain. His experiences range from managing a row crop and beef operation in Maryland to creating integrated supply chain solutions between dairy producers, growers and consumer packaged goods (CPG) companies. Most recently, he has led the launch of a soil health program at a global FMCG before returning to Cargill to lead row crop sustainability within Cargill's Sustainability Hub. Ryan holds a B.S. in Animal Science from Virginia Tech and a M.S. in Economics from the University of Delaware.

SPEAKER BIOGRAPHIES



Margaret Henry
*Director, Sustainable
Agriculture at PepsiCo*

Margaret Henry was born into a career of working in sustainable agriculture on a dairy farm in Kentucky. She has spent her life and career working to improve social, economic and environmental outcomes for rural communities around the world. She has a BA and BS from Brown University, training from Massachusetts Institute for Technology in System Dynamics and a Master's Degree from Princeton University in Science, Technology, and Environmental Policy. Her career has led her to work in government, NGOs and the private sector in places as varied as Mozambique, Brazil, the U.S. and India. She is the Director of Sustainable Agriculture at PepsiCo where she works on their strategy to reduce greenhouse gasses, improve water use, and improve livelihoods and human rights in agricultural regions around the world. She works with varied partners to bring about the outcomes that work for farmer and that further the deep commitment of PepsiCo to these communities.



Carter Morgan
Illinois & Indiana Farmer

Carter Morgan graduated from Purdue University in May of 2013 with a bachelor's degree in Agriculture Systems Management with minors in Crop Science and Farm Management. He currently lives with his wife, Abby, and farms about 2,700 acres of corn, soybeans and wheat in west central Indiana and east central Illinois with his family. Morgan Brothers LLC is 100% no-till with approximately 90% of their row crop acres having cover crops on them. Carter is very passionate about conservation farming, specifically cover crops. Carter coordinates small farmer networks that brings farmers together to connect with one another and then implement best ag practices.

PERSONAL NOTES

Thank you

As a coordinated and consistent group, ISAP focuses on messaging, outreach, training and education for farmers and their trusted advisors to bring together and disseminate new information and lessons learned in plain, practical language. Members work collaboratively to amplify the programs of each organization, share resources to gain efficiencies and identify synergies in achieving soil health and nutrient goals.

ISAP's members include: The Nature Conservancy, American Farmland Trust, Precision Conservation Management, Illinois Corn, Illinois Central College, The Wetlands Initiative, The Zea Mays Foundation, Soil Health Partnership, Illinois Land Improvement Contractors Association, Illinois Stewardship Alliance, Association of Illinois Soil and Water Conservation Districts, Illinois Pheasants Forever and Quail Forever, and University of Illinois Extension





ILLINOIS
SUSTAINABLE
AG PARTNERSHIP