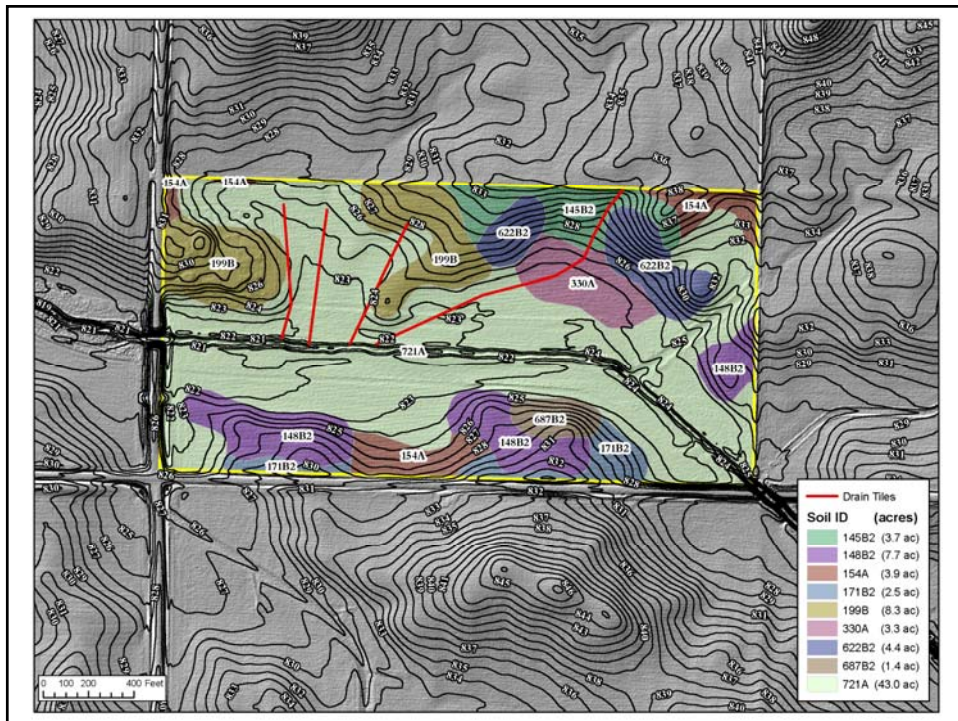
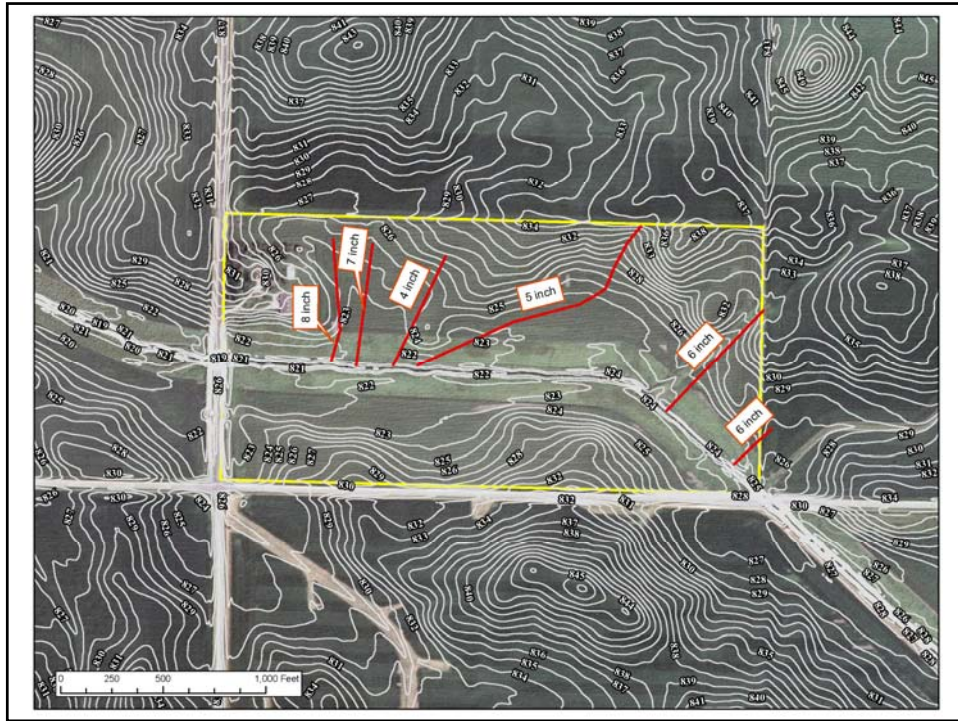
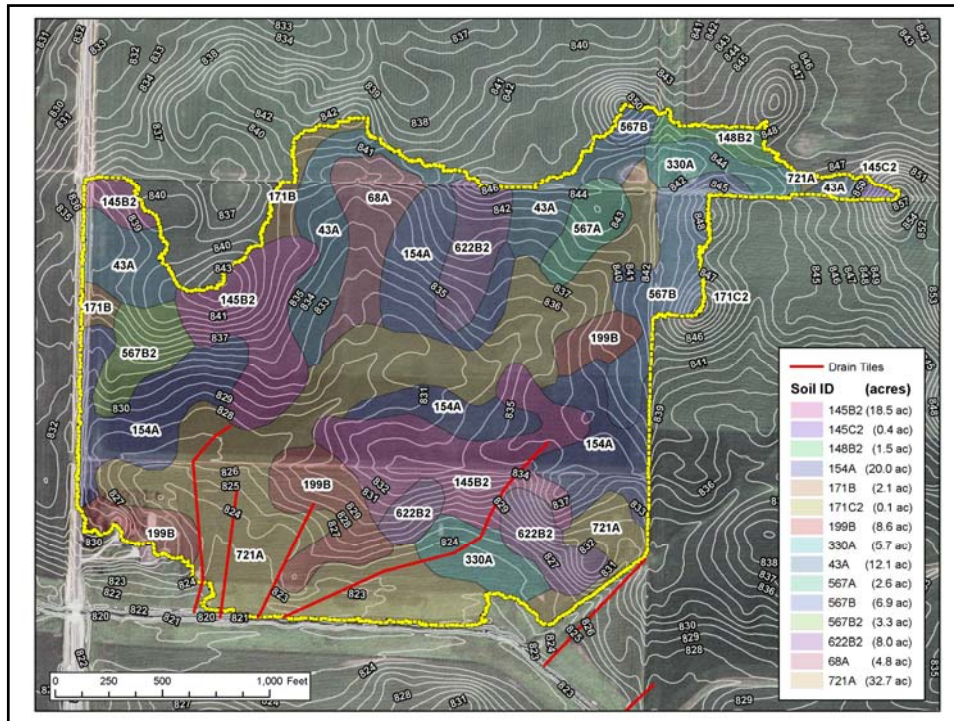


## PLANNING EXERCISE

Goal: Determine the appropriate location, size, and preliminary sketch of a constructed wetland that meets the basic practice standards.







**Soil Resource Data for Delineated Surface Water Areas (greater than 0.5 acres)**

Information derived from USDA NRCS Web Soil Survey (websoilsurvey.nrcs.usda.gov)

UNIT	MAP UNIT NAME	ACRES	HYDRIC RATING	DRAINAGE CLASS	HYDROL. SOIL GROUP	% CLAY*	% SAND*	MODIFIED SOIL PROFILE
145B2	Saybrook silt loam, 2-5% slopes, eroded	18.5	0	Moderately well drained	C	26.3	24.7	0-8" Silt loam 8-28" Silty clay loam 28-31" Clay loam 31-60" Loam
148B2	Proctor silt loam, 2-5% slopes, eroded	1.5	0	Well drained	B	25.4	27.7	0-9" Silt loam 9-32" Silty clay loam 32-49" Loam 49-60" Stratified silt loam to loamy sand
154A	Flanagan silt loam, 0-2% slopes	20.0	4	Somewhat poorly drained	C/D	29.2	13.7	0-8" Silt loam 8-45" Silty clay loam 45-49" Silt loam 49-60" Loam
171B	Catin silt loam, 2-5% slopes, eroded	2.1	0	Moderately well drained	C	31.3	12.5	0-8" Silt loam 8-43" Silty clay loam 43-60" Clay loam 60-115" Silt loam
199B	Piano silt loam, 2-5% slopes	8.6	2	Well drained	B	26.4	17.1	15-45" Silty clay loam 45-55" Loam 55-60" Stratified silt loam to loamy sand
330A	Peotone silty clay loam, 0-2% slopes	5.7	100	Very poorly drained	C/D	38.8	6.5	0-27" Silty clay loam 27-50" Silty clay loam 50-60" Silty clay loam
43A	Ipava silt loam, 0-2% slopes	12.1	15	Somewhat poorly drained	C/D	30.5	5.0	0-10" Silt loam 10-50" Silty clay loam 50-60" Silt loam
567A	Elkhart silt loam, 0-2% slopes	2.6	5	Moderately well drained	C	22.7	3.5	0-14" Silt loam 14-30" Silty clay loam 30-60" Silt loam
567B	Elkhart silt loam, 2-5% slopes	6.9	5	Moderately well drained	C	24.9	3.5	0-10" Silt loam 10-26" Silty clay loam 26-60" Silt loam
567B2	Elkhart silt loam, 2-5% slopes, eroded	3.3	5	Moderately well drained	C	23.0	3.5	0-8" Silt loam 8-26" Silty clay loam 26-60" Silt loam
622B2	Wyanet silt loam, 2-5% slopes, eroded	8.0	4	Well drained	C	23.6	34.6	0-8" Silty loam 8-24" Clay loam 24-60" Loam
68A	Sable silty clay loam, 0-2% slopes	4.8	85	Poorly drained	BD	28.7	2.1	0-28" Silty clay loam 28-60" Silt loam 60-80" Silt loam
721A	Drummer and Elpaso silty clay loams, 0-2% slopes	32.7	96	Poorly drained	BD	26.8	21.8	0-41" Silty clay loam 41-47" Loam 47-60" Stratified loam to sandy loam

\*Dominant component for depth range of 6-60"





## PLANNING EXERCISE

Goal: Determine the appropriate location, size, and preliminary sketch of a constructed wetland that meets the basic practice standards.

Tasks:

1. Estimate tile and surface drainage areas.
2. Determine treatment wetland area needed.
3. Determine the wetland location.
4. Determine layout (dimensions) and location of structures.
5. Draw plan view and cross-section to indicate inlet and outlet tile depth and location, size, normal pool, and any structures.
6. Consider what needs further investigation or determination.

